



# SOLUTIONS FOR THE OIL AND GAS INDUSTRY

Trusted to Protect Lives





Survitec

FRONT  
ADULT  
43+W  
LLOYDS REGISTER  
APPROVED  
AUTOMISED/ATW

OKA

11-800  
HyFlex

LINE

OPEN

CLOSED

CLOSED

# CONTENTS

3

Trusted to  
Protect Lives

4

Offshore  
capabilities

5

Lifeboat Inspection  
402

7

Valaris lifeboat  
case study



8

RaftXChange

9

Reliable rental  
solutions

10

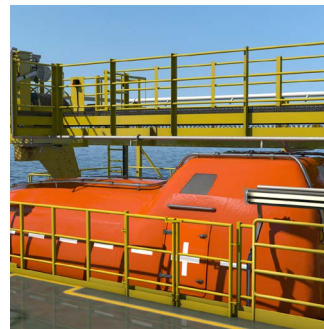
Offshore transfer  
support

11

Helicopter transfer  
PPE

15

CTV/W2W  
transfer PPE



16

Shell D&I case study



17

Survitec Viscom

18

Shell Shearwater  
case study

19

Headstart

20

Drydocking

21

FPSO protection

23

Fire systems

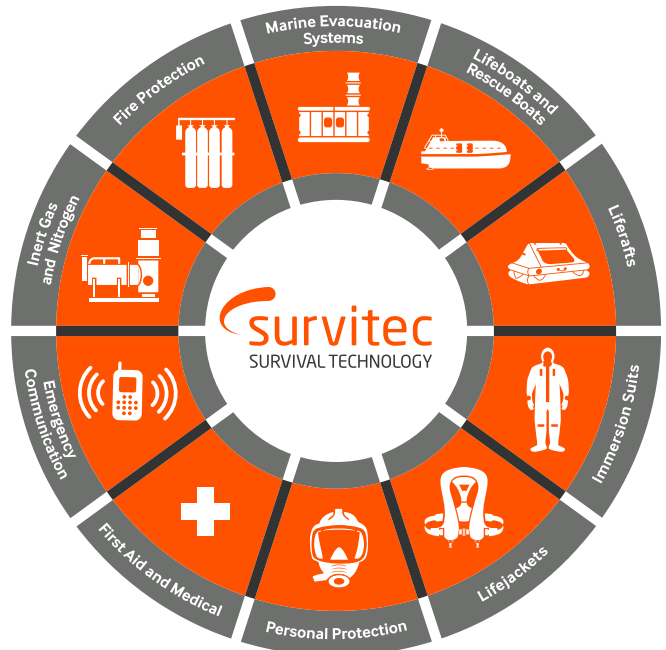
 **survitec**  
SURVIVAL TECHNOLOGY

# TRUSTED TO PROTECT LIVES

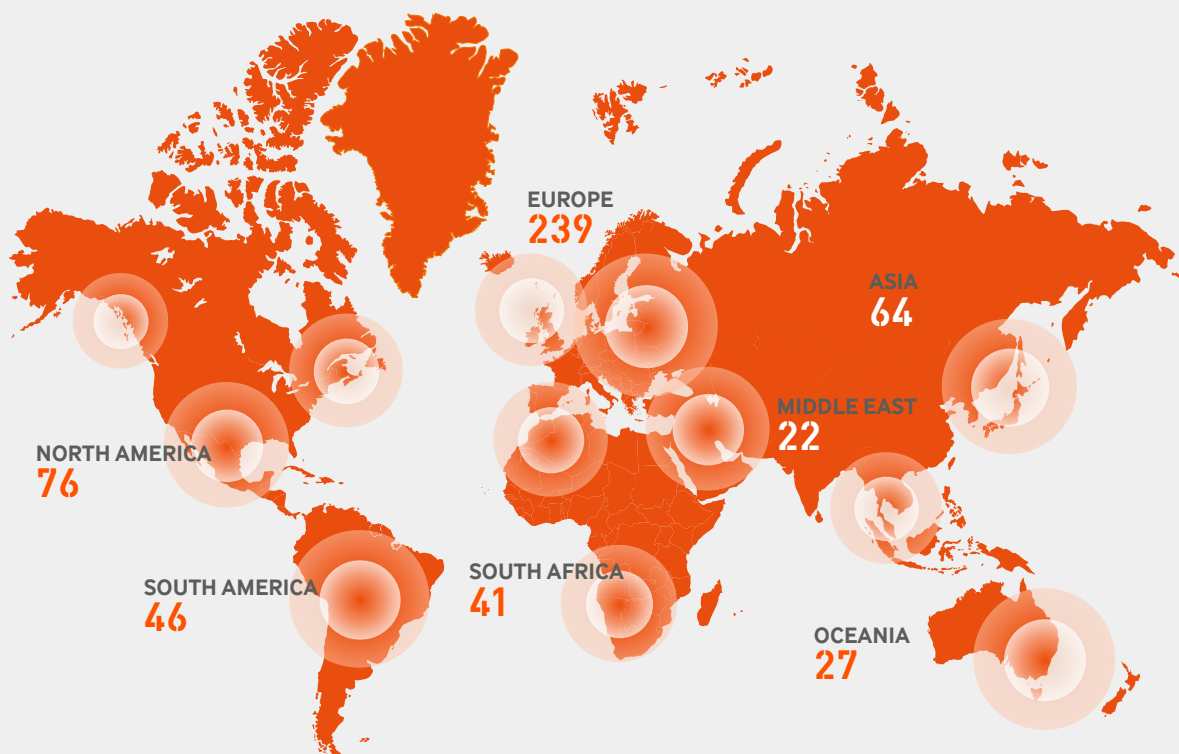
Pioneering Survival Technology to protect your offshore workforce and assets

We are pioneers of Survival Technology. Our wearable survival equipment, fire solutions and survival craft technology keep people safe when their life depends on it. We have 3,000 people that work with our partners in 96 countries to provide trustworthy solutions that reduce risk and help protect lives.

**Why? Because We Exist to Protect Lives**



World's largest Survival Technology footprint



# COMPLETE SURVIVAL TECHNOLOGY FOR YOUR OFFSHORE PROJECTS



13 14



- 1 Helideck crash kits
- 2 Fire protection
- 3 Fire suit
- 4 Lifejackets
- 5 Liferrafts
- 6 Man overboard recovery
- 7 Lifeboats

- 8 Lifting and inspection
- 9 Medical equipment
- 10 Immersion suits
- 11 Pyrotechnics
- 12 Stretchers
- 13 Passenger and crew transfer PPE
- 14 Aviation liferafts

# LIFEBOAT INSPECTION 402

Regulation simplified, global compliance delivered

Our Lifeboat Inspection 402 solution allows your vessels to spend less time in port and your fleet managers and administrators save the time and effort of arranging multiple inspections with potential associated travel costs. Moreover, with our solution, there are no hidden costs or extra requirements such as Original Equipment Manufacturer (OEM) certification.



**1** Annual and five-year inspections meeting SOLAS Chapter III and IMO MSC.402(96) requirements

**2** Authorised multi-brand inspection covers all lifeboats, rescue boats, davits and hooks

**3** All work carried out to consistent global standards by our multi-skilled certified Technicians

**4** Fire systems and personal lifesaving equipment can be included

**5** Unrivalled global network with 60+ Flag authorisations and Global Class approvals

**6** Single point-of-contact streamlines administration and logistics

Since the IMO MSC.402(96) mandate of 2020, you are no longer obliged to use OEMs or their agents for your commercial fleet lifeboat inspections. As a result, regardless of the make and type, you can have your lifeboats, davits and accessories inspected, repaired and certified through our Lifeboat Inspection 402 programme.

**7** Harmonised due dates reduces visit frequency and cost, with proactive due date monitoring and alerts enhancing compliance

**8** Repair, refurbishment or replacement recommendations provided on completion of inspections

**9** Some repairs and refurbishments can be actioned out on-the-spot to save time and cost of repeat visits

**10** Supply and commissioning of new or replacement lifeboats, rescue boats, davits and hooks

**11** Fixed price agreements help control costs

**12** Port and service priority worldwide eliminates delays



# CUSTOMER-CENTRIC APPROACH WINS OVER VALARIS FOR LIFESAVING APPLIANCE MAINTENANCE



Multi-brand safety and survival solutions through a single point of contact

In 2022, the world's largest offshore drilling company renewed its service agreement for the inspection, servicing, and maintenance of life-saving appliances (LSA) - including lifeboats, davits and fast rescue boats. The agreement covers Valaris' fleet of 11 drill ships, 5 semi-submersibles, and 36 jack-up rigs worldwide for another three years.

Valaris was impressed by our extensive network of more than 400 service stations worldwide, combined with streamlined LSA maintenance, which led to their decision to renew. Our "single point of contact" business

model, which combines technical services, customer services, operations, and administration, provides a hassle-free and cost-effective solution for offshore oil and gas operators. Ultimately, offshore oil and gas operators benefit from a single service provider without the administrative burden and costs associated with contracting multiple service partners.

The agreement came at a time when the energy market is experiencing a sudden rise in oil prices with demand far exceeding supply.





# RAFT X CHANGE

## TRUSTED RENTAL SOLUTIONS

Everything you need. Everywhere you need it.

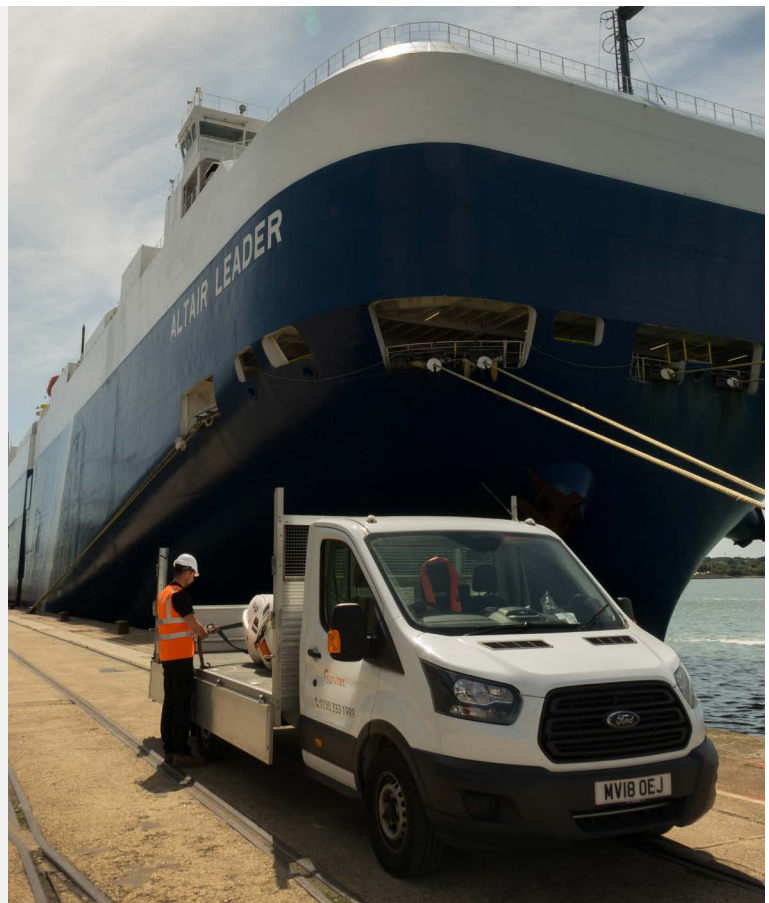
### Why choose a liferaft rental and exchange model?

By choosing a liferaft rental and exchange contract with Survitec, there is no capital investment required.

We offer a straightforward administration approach with a key account manager, backed up by an experienced global customer service team, facilitating all the preparation and logistics of your liferaft exchange. Above all, you can count on Survitec to provide you with complete peace of mind.

### Key Benefits

- ✓ Liferafts are replaced with newly serviced, fully certified liferafts of same capacity and type
- ✓ Comprehensive network, ensuring availability in all key ports worldwide
- ✓ Supports a vessel's short port stay
- ✓ Reduces the amount of handling required
- ✓ Offers a full guarantee for the duration of the rental period
- ✓ Facilitates both an overall cost reduction and better cost management
- ✓ Less transportation required
- ✓ Highly skilled technicians, ensuring rafts are always in compliance with regulations



COST CONTROL



FLEXIBILITY



WORLDWIDE COVERAGE



ASSURANCE



SIMPLICITY

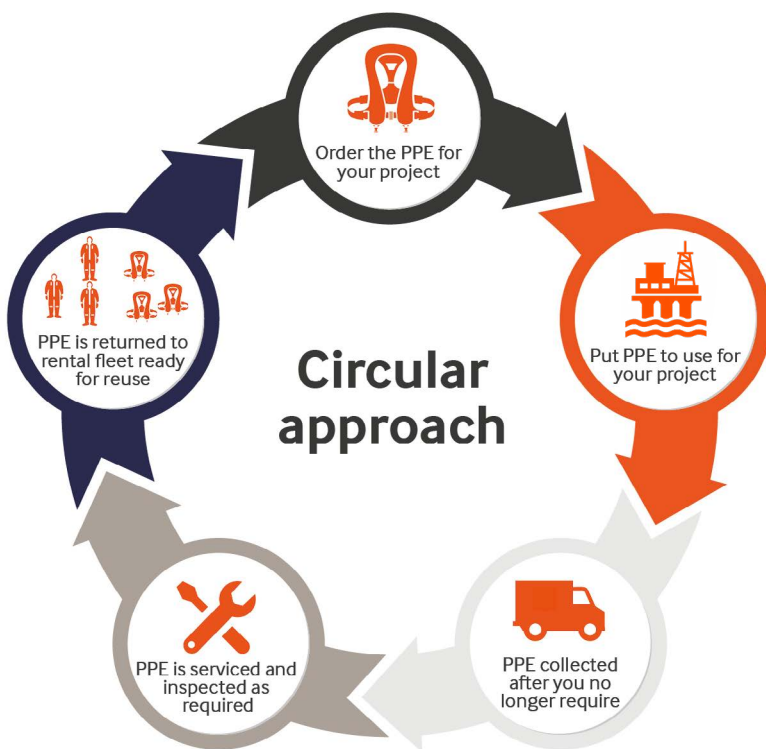
# RELIABLE RENTAL SOLUTIONS

For a greener, more sustainable approach to safety

Following the acquisition of Hansen Protection, our expanded rental model deepens our offering to enhance our ability to support you with your offshore transfer requirements.

The increased focus on climate change, carbon footprint and a responsible resource management all adds to the virtues of renting your offshore project PPE.

Instead of a PPE set being in use for just 3-5 months a year, rented PPE is constantly at work. This reduces the need for stockpiling significantly and supports a shared, circular economy.



# OFFSHORE TRANSFER SUPPORT

From air to sea - your Survival, our Technology

We partner with reputable helicopter and CTV/ W2W operators to provide state-of-the-art Survival Technology that protects your aircrew and passengers when traveling to and from offshore locations.

“

With a fleet of more than 60 state-of-the-art helicopters carrying out daily passenger transfers, we cannot afford to be complacent in the selection of those companies we partner with. The equipment and services Survitec supplies is key to ensuring all operations are carried out with the utmost safety, efficiency and comfort. ”

**Jamie John, Aberdeen Base Manager, Noordzee Helikopters Vlaanderen (NHV).**



# HELICOPTER TRANSFER PPE

Your trusted inflight guardian

Crew safety ensemble



## 1000S Front Aircrew Immersion Suit

Advanced design and fabric enhance flying performance and comfort for helicopter front aircrew. The outer shell of the suit is waterproof, breathable and inherently flame retardant, while the thermal lining uses phase change materials to combat thermal stress and increases wearer comfort. 4-hour certified.

- ✓ Three entry zip configurations available
- ✓ GORE-TEX Nomex outer shell combines breathability with fire protection
- ✓ Ergonomic design tested on all major aircraft types to enhance flying performance through superior temperature control and comfort
- ✓ Pockets can be adjusted to suit aircraft, mission or pilot preference





## Halo Aircrew Lifejacket

The Halo Aircrew lifejacket delivers a synergetic triad of comfort, style and safety performance. The ergonomic design is tailored to reduce interference with associated equipment, so aircrew duties can be completed unhindered and in comfort. Meanwhile, the life-saving technology protected within provides enhanced in-water performance.

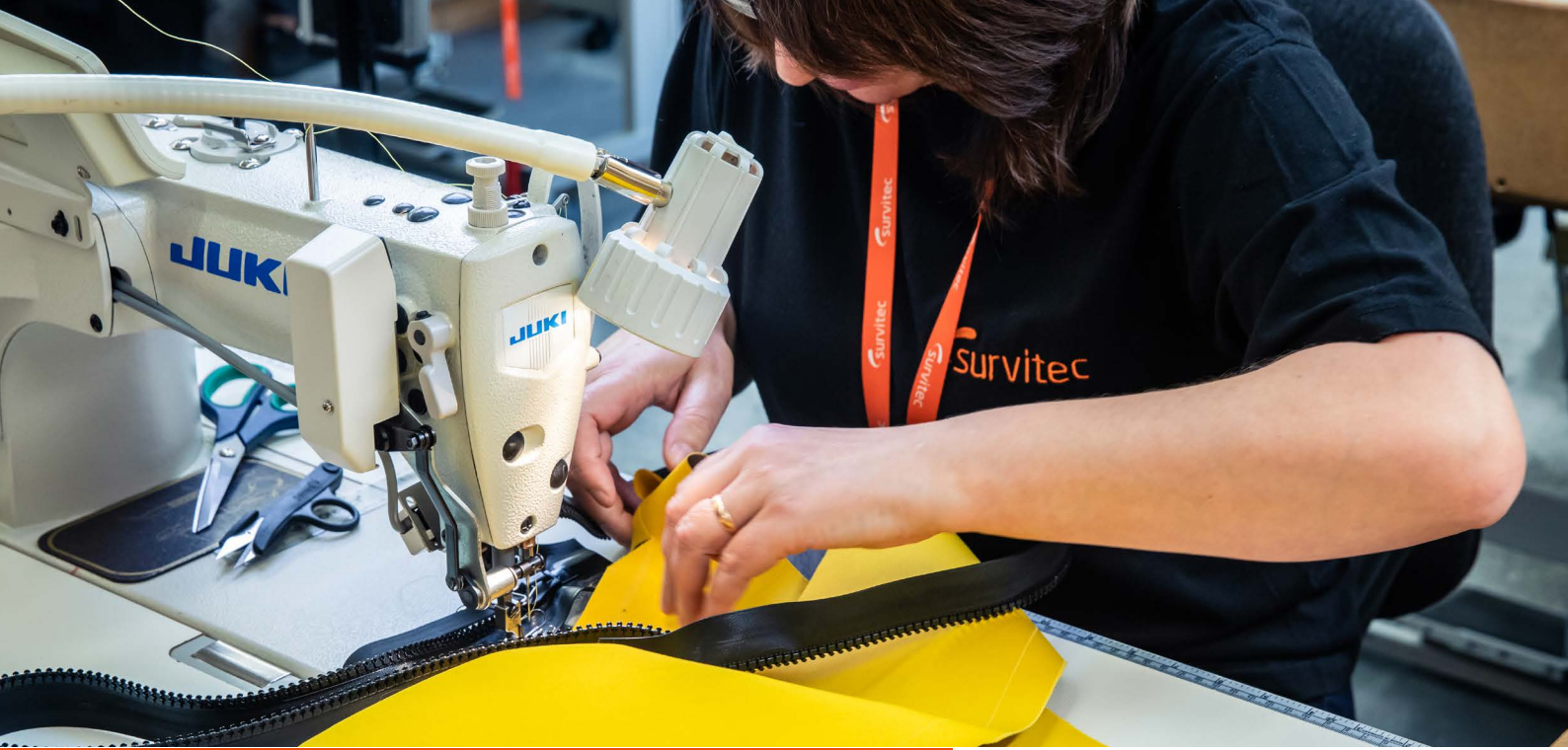
- ✓ Nomex construction for product longevity
- ✓ Customisable configuration of accessory pocket
- ✓ Ergonomic Fusion 3D design that adapts to the shape of the wearer
- ✓ Available with fully integrated bespoke EBS
- ✓ Halo Hood System can be deployed over crew helmets



## Survitec Aircrew EBS

This lightweight EBS is designed for use with our Halo Aircrew lifejacket. It has been engineered to be deployed and used without restricting emergency actions by the aircrew. The 310 Bar cylinder provides 80% more breathable air than the industry minimum standard. Approved by CAA-UK in accordance with CAP 1034 and EN 4856:2018 Rotorcraft Emergency Breathing System (EBS).

- ✓ Capacity to hold 99.2lt of breathable air
- ✓ Ready to use
- ✓ Colour coded contents gauge
- ✓ Compressor or refill station as part of the Halo package
- ✓ Training provided



## Passenger safety ensemble

### 1000S Passenger Immersion Suit

Award-winning solution for helicopter passengers travelling offshore. This triple approved (SOLAS, ISO and ETSO) has been constructed with a focus on comfort, style and performance.

- ✓ GORE-TEX Nomex shell for breathability and fire protection
- ✓ NASA-developed technology for thermal regulation
- ✓ Unisex 'FormFit' design inclusive for all shapes and sizes
- ✓ Neoprene seals for easy donning and no leaks



### SeaAir Barents 2 Immersion Suit

This suit is a further development of SeaAir1, which received the award for Design Excellence by the Norwegian Design Council, has been developed for helicopter transport over cold waters and is popular across Scandinavia and Canada.

- ✓ Unique integrated passenger suit; no separate lifejacket needed
- ✓ Triple certified: SOLAS, ETSO, and Norwegian Maritime Directorate
- ✓ Collar with manually inflatable buoyancy lung for comfort and freeboard in water
- ✓ Ergonomic design with excellent fit





## Halo Passenger Lifejacket

Our Halo Passenger lifejacket provides your passengers with the most advanced lifejacket solution available for helicopter transfer – offering an enhanced level of safety, comfort and in-water performance.

- ✓ Nomex construction for fire protection and product longevity
- ✓ Ergonomic Fusion 3D design that adapts to the shape of the wearer
- ✓ Available with fully integrated bespoke Survitec EBS
- ✓ Integrated Halo Hood System provides enhanced in-water protection and visibility



\* Halo Training lifejacket available, a training replica for the operational Halo Passenger lifejacket

## Survitec EBS

This lightweight EBS can be deployed in one movement and is designed for use with our Halo Passenger lifejacket. The 310 Bar cylinder provides 80% more breathable air than the industry minimum standard. Approved by CAA-UK in accordance with CAP 1034.

- ✓ Capacity to hold 99.2lt of breathable air
- ✓ Ready to use
- ✓ Colour coded contents gauge
- ✓ Compressor or refill station as part of the Halo package
- ✓ Training provided



# CTV TRANSFER PPE

'Walk 2 Work' safely and in comfort

## Passenger safety ensemble

### SeaBreeze CTV Immersion suit

This is our robust, lightweight 1-hour work and immersion suit designed for CTV transfer in demanding environments. Your passengers will benefit from the ergonomic and breathable construction - as well as the easy integration of safety equipment.

- ✓ Breathable Superlight 3L outershell fabric
- ✓ Ergonomic Y construction for unrestricted movement
- ✓ Compatible design to accommodate the required lifejacket and additional harness where applicable
- ✓ Practically placed watertight pockets



### ErgoFit SOLAS Lifejacket

Designed for the offshore energy industry for vessel transfer and working-at-height. This lifejacket is an ergonomic constant-wear solution with uncompromising in-water protection.

- ✓ High-volume bladder for superior in-water protection
- ✓ EXOLOK locks gas cylinder securely for safety
- ✓ Ergonomic 3D design for long-lasting comfort
- ✓ Compatible with Petzl, Skylotec, and Cresto harnesses



\*Other SOLAS lifejackets available on request.



# DRIVING DIVERSITY AND EQUALITY IN THE OFFSHORE ENERGY INDUSTRY WITH SHELL



## Breaking workplace barriers and winning awards with Shell

Together with Shell, we have been awarded a prestigious accolade in helping to remove workplace barriers.

At the Offshore Achievement Awards, we scooped the award for diversity and inclusion, recognising a joint effort in removing barriers, improving the working experience for colleagues and building an inclusive culture.

The award resulted from a project initiated by the findings of a Shell colleague survey about the offshore immersion suit experience.

The findings revealed an increasing number of male and female crew having to change immersion suits multiple times pre-flight. As a result, this could cause flight delays, embarrassment, and possibly having an ill-fitted immersion suit.

Based on the feedback provided, we took immediate steps to adjust the immersion suit rental fleet by increasing the sizing availability by 30%.



This work is truly industry changing and sets a clear marker that the ideas of just a few can revolutionise the way we work, removing barriers and creating a more inclusive offshore world for years to come. ”

**Susannah Stott, Integration Analyst for Low Carbon Fuels an Balance Network Member, Shell**

# SURVITEC VISCOM

## Visual communication solutions

Survitec Viscom is our globally recognised provider of visual communication solutions specialising on video and 3D animation.

Our experience in creating multimedia services - combined with in-depth knowledge of safety and survival equipment - enables us to offer you the most appropriate and effective packages to promote your messaging and services.

Our clients know, like and trust us because we have the experience and expertise required to create memorable and life-saving material with minimal guidance to the tightest schedule.



# SURVITEC INCREASES SHEARWATER LIFEBOAT CAPACITY IN RESTRICTED CONDITIONS



Helping Shell to unlock the platform's potential and secure a bright future for the facility

Survitec was commissioned by Shell to provide a turnkey solution to increase the lifeboat capacity on the Shearwater gas hub by over 22%. The solution was to replace the existing three 49-person capacity lifeboats with three 60-person lifeboats, taking the total capacity from 147 to 180. Survitec had to overcome several challenges, including a lack of crane coverage, compressed project delivery schedule, and access limitations.

Survitec Viscom carried out a comprehensive 3D survey of the Shearwater platform to understand the site layout and access limitations. The survey revealed new longer davit maintenance platforms were required to support the larger lifeboat, which were designed, fabricated, and tested onshore by Survitec over a four-week period. The capabilities of Survitec Viscom were critical to the success of this project.

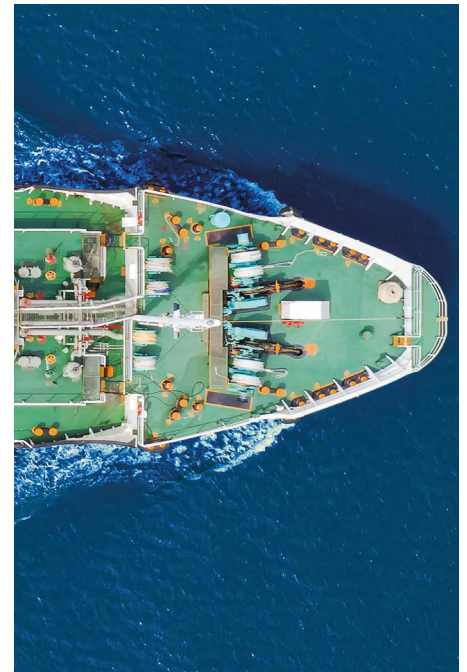
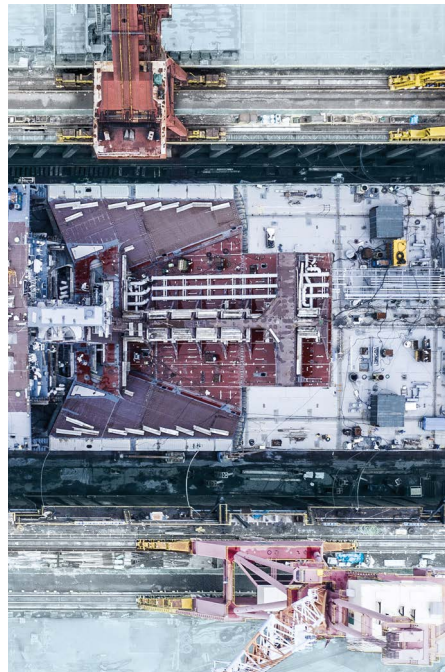
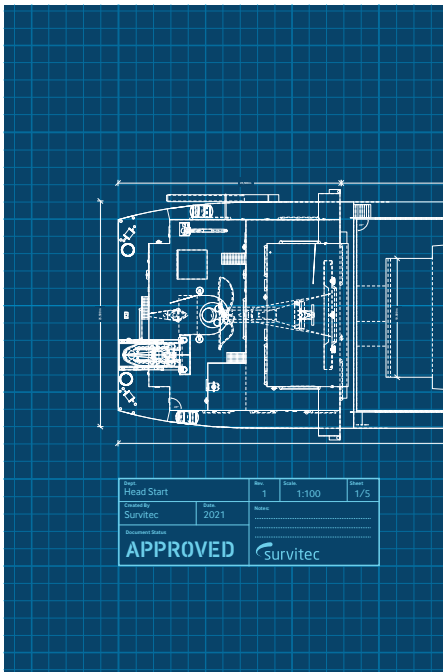


# HEAD START TO MARITIME SAFETY FOR NEW BUILDS

Setting you on course for a lifetime of safety at sea

From planning, through construction, to commissioning and beyond, we aim to deliver an unparalleled, safety-first service to set up your ship for a lifetime of safety at sea. We work closely with research institutions, regulatory bodies and class societies to keep abreast of industry trends and legislative requirements and to stay at the forefront of innovation in survival technology.

As a result, you can depend upon us for up-to-the-minute advice and recommendations around compliance and a full range of high-quality, SOLAS-compliant safety equipment. Plus, once your vessel is operational, an unrivalled global network to keep your crew, ship, cargo and passengers safe throughout many years at sea.



## Planning the build:

### Expert consultancy and advice.

Our technical expertise centres can identify the most appropriate solutions to afford maximum protection for your cargo and crew while also allowing for the daily routines and commercial operations of your vessel.

## During the build:

### Dedicated new build teams close to the shipyards.

From supplying the initial engineering drawings, to providing technical support during installation and commissioning, our local teams are close at hand to liaise with the yards and facilitate your build.

## After the build:

### Superior through-life support.

We offer a range of options to suit your needs, from "on demand" repairs, to fixed price agreements, to fully-managed safety contracts for personalised assistance with due date management and proactive service scheduling.

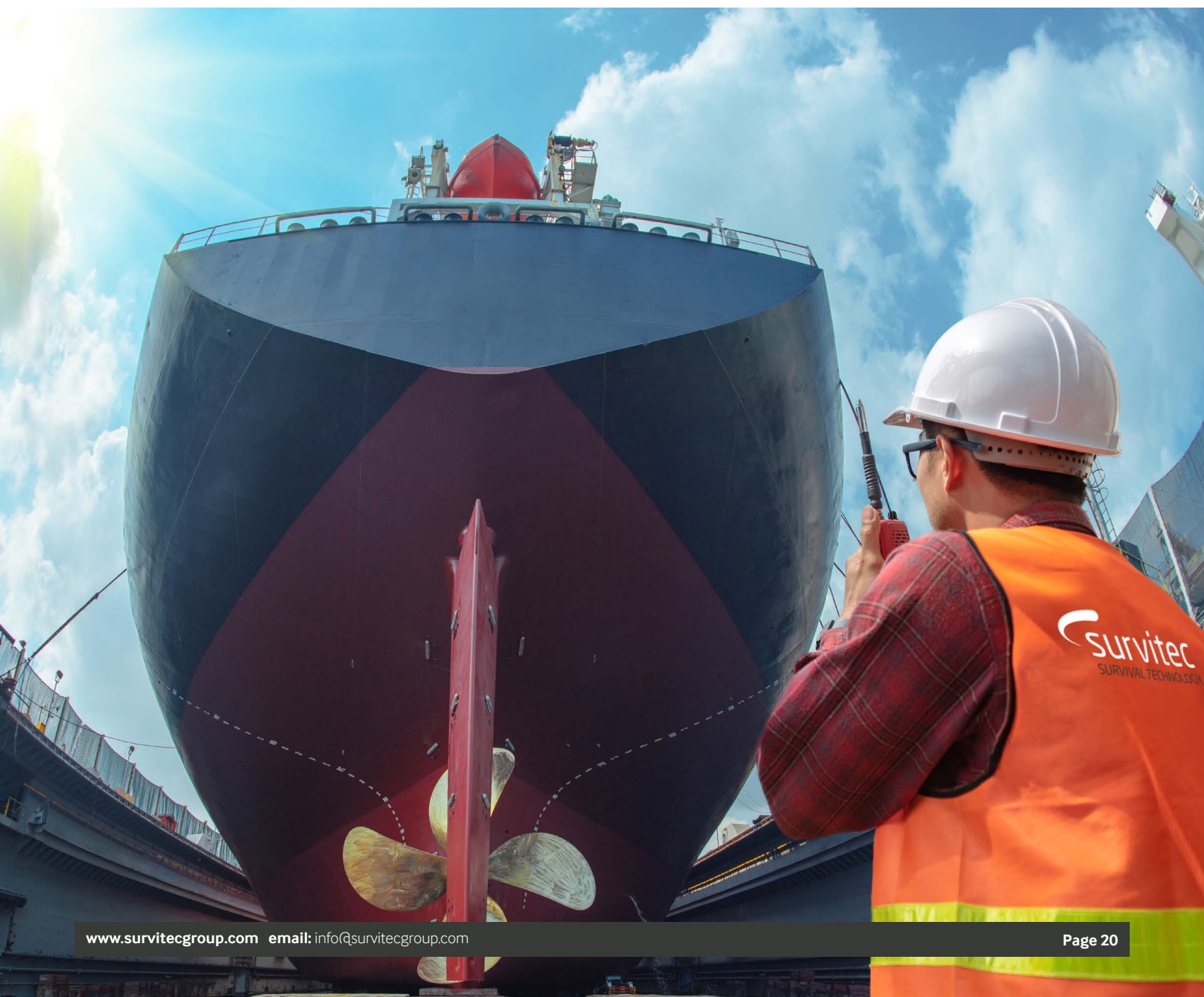
# IS YOUR VESSEL DUE FOR DRY DOCKING?

Simplify your safety servicing with us

Dry dockings put a strain on your time and resources. You have several critical factors to consider: flag and class requirements, OEM requirements, the current condition of your onboard equipment, and the requisition of parts and suppliers. Let us take the strain. As the experts in Survival Technology, we offer a full safety management service that can take care of all your onboard safety servicing requirements and help ensure you leave dry dock on schedule, within budget and certified safe to sail.

## What our fully managed service means for you

- ✓ Confidence in compliance
- ✓ One point of contact, less administration
- ✓ Greater flexibility
- ✓ Greater transparency
- ✓ Peace of mind

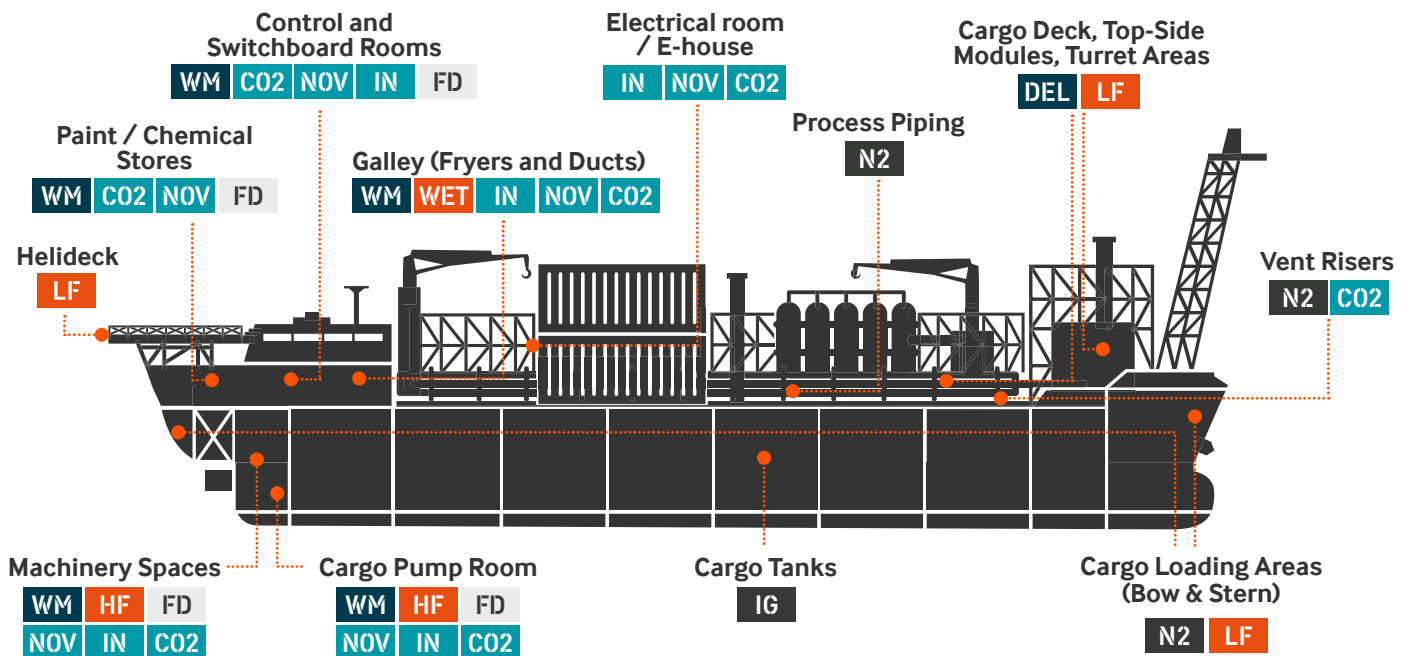


# TRUSTED TO PROTECT YOUR FPSO

Your Survival Technology partner for bow-to-stern protection against fire

As one of the leading fire solutions providers for the maritime industry, we offer a range of high-quality, SOLAS-compliant fire systems to afford maximum protection for your passengers and crew, whilst also allowing for the daily routines and commercial operations of your ships.

We're also working hard to harness digital technologies to help you with all aspects of fire safety, from monitoring protected spaces for early detection of fire and rapid release of fire systems; to providing remote support and technical assistance in diagnosing faults and optimising operations; through to assisting with routine maintenance. And of course, we're always here to provide ongoing crew training if required.



From fire prevention, through fire detection and suppression, we have a range of solutions to ensure bow-to-stern protection for your FPSO.

## System Key

### Inert Gas Systems

- IG Inert Gas
- N2 Nitrogen

### Powder-Based Systems

- DCP Dry Chemical Powder

### Water Based Systems

- WP Wet Pipe
- DEL Deluge
- WM Water Mist X-Flow
- MFW Mobile/Fixed Water Monitors
- WL Water Lance

### Foam-Based Systems

- HF High Expansion Foam
- LF Low Expansion Foam
- WET Wet Chemical

### Fire Detection Systems

- FD Fire Detection
- SDS Smoke Detection System

### Gas-Based Systems

- CO2 CO<sub>2</sub>
- IN Inergen
- NOV Novec

# TRUSTED TO PROTECT YOUR FPSO

You can rely on us for expert advice, recommendations and a broad product portfolio of high-quality, SOLAS-compliant safety equipment. Plus our global, multibrand service network is there to support you with ongoing maintenance and safety inspections to ensure your systems and equipment continue to operate safely and remain compliant.



At Petredec we strongly believe that when it comes to safety there can be no compromises. Our crews deserve top quality safety products backed up by a worldwide service network and we achieve this and more by partnering with Survitec.

**Philip Harwood**  
Fleet Director, Petredec



# FIRE SYSTEMS

Failsafe protection for your crew and cargo



## Safety and reliability

100 years experience supporting our customers to standards beyond minimum compliance to ensure the safety of passengers and crew.



## Ease of use and maintenance

Systems that are simple to install and easy to operate, with global inspections, servicing and spares readily available through our certified service network and supply chain.



## Optimised design

Quality systems using high grade material and with reduced weight to lower fuel consumption and reduce environmental impact. An optimised footprint also saves space and allows for better technical or commercial use.



## Superior through-life support

We offer a range of options to suit your needs, from on-demand repairs to fully-managed safety contracts, to support you with all your fire and safety service requirements.

## XFLOW Water Mist System

Our Water Mist Solutions can be applied for total flooding, local application firefighting (LAFF), accommodation areas, galley (Deep Fat Fryers) and ducts. Importantly, our solutions are versatile, giving you the option to easily integrate all systems into one. The secret to the effectiveness of our water mist technology lies in the unique water mist nozzle which circulates a combination of fine water droplets and water mist. This suppresses the supply of oxygen and absorbs the heat to extinguish fire quickly, whilst also using less water, to give you optimal system performance. Plus, it can be activated immediately, without the need to evacuate first.





## Inergen® Clean Agent System

We're making extinguishing fires in enclosed spaces more efficient, with solutions that can be deployed quickly and effectively with minimal risk to your crew, equipment and the environment. Our Inergen® system is a fire extinguishing system specially designed for enclosed spaces. Inergen® is a clean agent that extinguishes the fire by reducing the oxygen level in the protected space, without compromising your health and safety. This system is especially suited for control rooms, electric switchboard rooms and rooms with sensitive equipment. It is often used as a complementary product to water mist or foam in water sensitive areas and is also very effective for galley ducts fire protection.



## 1230 Clean Agent System

Our 1230 system is an alternative to traditional fire extinguishing systems that contain components such as Halon and CO<sub>2</sub>. This total flooding system is a high quality, compliant fire extinguishing system using a clean agent that is both environmentally friendly and harmless to people. It is the perfect choice for rooms with sensitive equipment such as pump rooms, compressor rooms and control rooms and for vessels where space is limited.



## Deep Fat Fryer (Wet Chemical) Extinguishing System

Our Deep Fat Fryer Extinguishing System is a self-contained, automatically-operated fire extinguishing system that provides fast and effective protection against fires in deep fat vats. It can protect one deep fat fryer (50 litres, 800mm x 400mm), or up to three deep fat fryers (each 27 litres, 400mm x 360mm). Our system uses water with foam concentrate to form a film which separates the flammable liquid from the supply of oxygen to extinguish the fire quickly and prevent reignition, ensuring the highest protection for your passengers and crew.



## High Expansion Foam System

Our High Expansion Foam Fire Extinguishing System provides extremely effective protection for machinery space applications (especially with alternative fuels such as methanol/ethanol) and can be installed as a total flooding solution for the entire machinery room or for individual compartments. This quick-activation system is designed to minimise fire and heat damage to equipment and structures. It is easy to install and operate and contains no hazardous decomposition products.



## High Pressure CO<sub>2</sub> System

Our CO<sub>2</sub> system is a total flooding system for enclosed machinery spaces and galley ducts. Trusted by hundreds of vessels worldwide, our system is proven to be fast and effective and requires minimal maintenance making it your first choice for a reliable and cost-effective solution.



## Dry Chemical Powder System For Bunkering Stations

This is an ideal solution for bunkering stations on dual fuelled LNG vessels. If flammable gases ignite, our Dry Chemical Powder fire extinguishing system (DCP system) breaks down the chemical reaction within the fire and suppresses the flames almost immediately. Our system is an effective, non-toxic solution that is harmless to your crew and the environment.





Schedule  
a consultation



**GET IN TOUCH**

**SURVITEC**

4th Floor, 12 Finsbury Square, London, EC2A 1AS, United Kingdom

**Email:** [info@survitecgroup.com](mailto:info@survitecgroup.com)

**www.survitecgroup.com**

**Copyright Notice**

The copyright, trademarks, domain names and other intellectual property rights in all material and information in this presentation belongs to Survitec Group Limited. All rights are reserved.

**Disclaimer**

This document provides general information about Survitec and its companies, its products and services, and summarises general capabilities and offerings which we deem to be of relevance to our customers. Whilst Survitec has taken appropriate steps to ensure the accuracy of the information contained in this document, Survitec gives no warranty regarding the accuracy or completeness of such information.

This presentation was prepared to provide information and does not constitute a contract. Survitec reserves the right, without prior notice, to change, delete, supplement, or otherwise amend at any time the information, images, and offerings contained in this presentation, or other documents. Survitec shall not be liable for any loss or damage of whatever nature (whether direct, indirect, consequential or other) that may arise as a result of any third party relying on the information contained in this document (but nothing in this disclaimer excludes liability for death or personal injury arising from negligence or any fraudulent misrepresentation).

For further detailed information, prices, terms and conditions, customers should contact Survitec at [info@survitecgroup.com](mailto:info@survitecgroup.com)

Rv4