



CREWSAVER ALKALINE LIGHT (CAL)

LIFEJACKET LIGHT WITH ALKALINE BATTERY ↓

The Crewsaver Alkaline Light (CAL) is a lifejacket light designed to accommodate those seeking a more environmentally friendly option whilst minimising the disposal and transportation costs associated with lithium alternatives.

With the option to be effectively surface or recess mounted, the SOLAS approved CAL provides a multi-mount solution for those seeking versatility in their fleet. The CAL can be attached to a point on the jacket to become a surface light or placed into a low profile circular housing unit which is permanently recessed in the lifejacket. Once expired the light is easily replaced and disposed of.

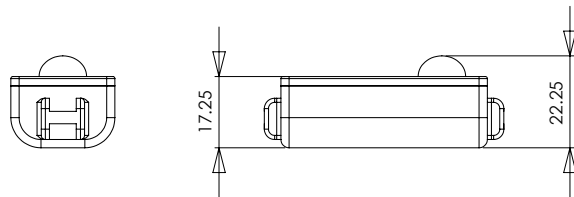
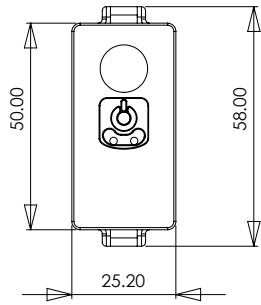
Complete with an integrated sensor, the CAL is a cable-free solution which will activate to flash automatically once fully immersed in water.

FEATURES

- ALKALINE POWERED FOR A GREENER ALTERNATIVE WHILST REDUCING DISPOSAL AND TRANSPORTATION COSTS
- CAN BE SURFACE OR RECESS MOUNTED
- LOW PROFILE DESIGN
- ACTIVATES ON CONTACT WITH WATER OR MANUALLY
- FLASHING LED LIGHT
- SOLAS APPROVED
- 5 YEAR STORAGE LIFE



CREWSAVER ALKALINE LIGHT (CAL) ↓



TECHNICAL DATA	
Light Output	Minimum 8 Hours
Light Type	Lumiled LED
Material	PCTG/ABS/Silicone
Storage Temperature	-30 °C to 65 °C
Optimum Operating Temperature	0 °C to 45 °C
Activation	Automatic water activation with switch for manual operation
Battery Type	AAA Alkaline
Storage Life	5 years
Maintenance	Periodic check of operation

APPROVALS
MED/SOLAS



RECESS



SURFACE MOUNTED



Ordering Information

PRODUCTS	
Product Number	Product Name
10277	Crewsaver Alkaline Light (CAL)

Lifejackets fitted with CAL

PRODUCTS	
Product Number	Product Name
13610	Premier 2010 LJ Adult + CAL Surface mounted
13611	Premier 2010 LJ Adult + CAL Recessed
13612	Premier 2010 Crew + CAL Recessed
13616	Premier 2010 LJ Child + CAL Surface mounted
13617	Premier 2010 LJ Infant + CAL Surface mounted
13618	Premier 2010 LJ Crew + CAL Surface mounted
13668	Premier 2010 LJ Child + CAL Recessed
13669	Premier 2010 LJ Infant + CAL Recessed
13672	Premier Compact + CAL Recessed
13679	Premier Compact + CAL Surface mounted
13690	Premier Compact Crew + CAL Recessed
13691	Premier Compact Crew + CAL Surface mounted

Accessories

PRODUCTS	
Product Number	Product Name
11271	Surface mount clip for CAL
11272	Circular recessed housing for CAL

survitec

GET IN TOUCH

Phone +44 (0)1329 820 000

Email crewsaver.sales@survitecgroup.com

www.survitecgroup.com

Survitec House, Lederle Lane, Gosport PO13 0FZ