

survitec

# 470 GP/GPM FAST RESCUE INFLATABLE BOAT

For hazardous coastal waters



**A robust design to enable you to navigate difficult waters.** When conditions are continuously changing and rescue scenarios become more difficult, the boat has been adapted to accommodate a larger capacity of crew and their extensive kit.

## BENEFITS:

- ✓ Inflatable deep V shaped keel designed to support manoeuvrability in all water conditions
- ✓ Rapid single-point inflation via pressurised cylinders as used in a SCBA breathing apparatus
- ✓ Robust hi-spec Neoprene-Hypalon material designed to withstand rapid waters and abrasion from floating debris
- ✓ Multiple handles for lifting and towing
- ✓ Easy to pack and rapidly deploys ensuring inflation can happen from almost any location
- ✓ Three different floor options available: Inflatable floor, segmented floor and roll up floor



“ **Small package dimensions aids stowage and transportation** ”

TRUSTED TO  
PROTECT LIVES

# 470 GP/GPM FAST RESCUE INFLATABLE BOAT

## TECHNICAL DATA

### 470 GPM INFLATABLE BOAT

Length overall	4,700 m	
Width overall	1,955 m	
Length inside	3,400 m	
Width inside	0,915 m	
Weight hull	57 kg	
Buoyancy chambers (Stk)	5	
Max. Payload	1420 kg	
Crew limit (Stk)	10	
Max. Motorization	44 Kw	60 ps
Max. Weight motorization (single or twin)	130 kg	
Buoyancy	1,98 m <sup>2</sup>	
Boat inner surface	2,93 m <sup>2</sup>	
Tube diameter	52 cm	
Tube diameter bug	47 cm	
Fabric	Neoprene - Hypalon	

## BOAT SIZE RANGE

### BOATS AVAILABLE IN THE FOLLOWING SIZES:

	420GPM	470GPM
Length	4,200 m	4,700 m
Width	1,800 m	1,955 m

#### STV Valve

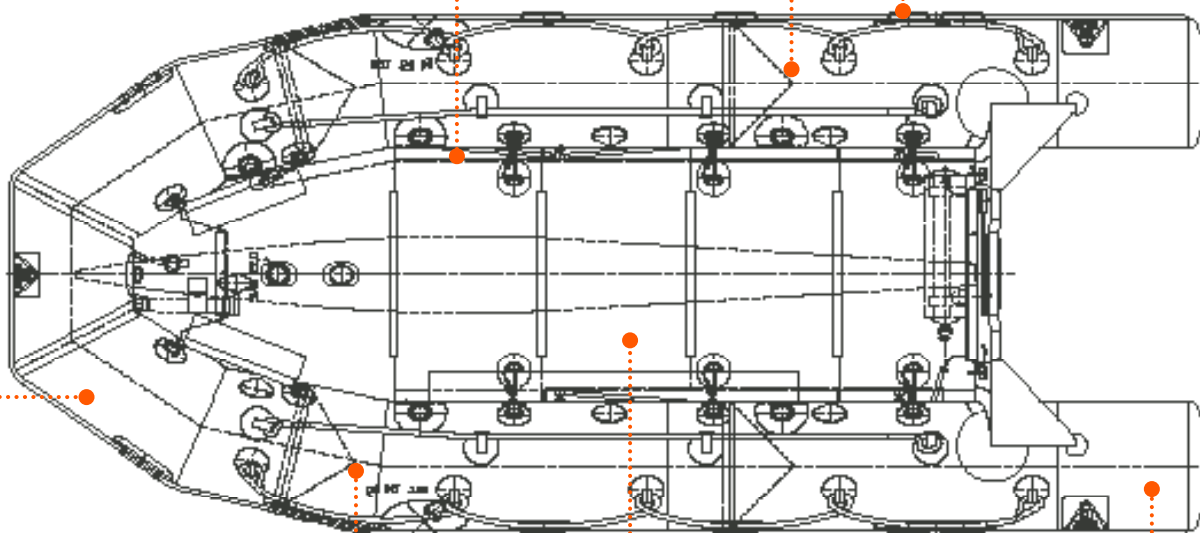
Switchable transfer valves, for use with rapid inflation and deflation for subsurface caching

#### Single Point Inflation

Single/Twin depending on task. Can inflate 5.3 M boat in 1 minute

#### Single/Twin Soft Handles

Rounded for better grip and push flat to the buoyancy to avoid snagging hazard



#### Military C7 Inflation Valve

Flush to the buoyancy and interchangeable with a simple socket tool, no need to cut out and replace damaged valves, unique to Survitec

#### Grip Patches

To assist personnel with raiding, boarding and secure seating of pax

#### Multiple Floor Options

As per customer requirements

#### Military C7 Inflation Valves

Positioned to minimise residual air during recovery of sub-surface assets